

**LINBECK**  
GAS-WATER-CIVIL



**Building trusted partnerships  
Delivering quality services  
Collaborating as a team**



# About us

Linbeck is a privately owned company providing repairs & maintenance, civil construction and licensed plumbing services, to asset owners in the gas and water industry.

Established in 1981 Linbeck prides itself on its track record for providing quality work and value to our clients during all projects we undertake. Our proven service delivery is backed by years of experience; our management and key personnel bring a high level of expertise working within the gas and water industry.

## Commitment to Quality, Health, Safety and the Environment

Linbeck prides itself on the highest levels of Quality, Safety and Environmental compliance. With a proactive commitment to zero harm, Linbeck takes the ongoing health, safety and wellbeing of our employees, clients and general public very seriously and endeavour to adhere to all HSEQ obligations. For each project we undertake, Linbeck has a specific management plan which provides a solid framework for site compliance and business excellence

To ensure that the highest standards are maintained across the business, Linbeck has implemented a Quality Management System and has current ISO certifications.





## Our Values



**Honesty**



**Integrity**



**Quality**



**Collaboration**

Linbeck core values are Honesty, Integrity, Quality and Collaboration. As a business we all work together as one team to ensure we deliver quality outcomes. We're committed to developing and maintaining strong partnerships with people impacted both directly and indirectly by our operations. Our transparency and stakeholder engagement is crucial to ensuring successful service delivery and sustaining positive relationships based on trust and mutual benefit. At Linbeck **we do what we say we will do.**

Our commitment is to the continuous improvement and refinement of our integrated management systems, working hard, accepting challenges and always being open to new ideas.

## Our Mission

To be the leading and preferred service provider to the gas and water industry.



# SERVICES



## Gas

Linbeck has extensive experience providing Corrective Maintenance, Emergency response, Construction and Project services on gas networks.

As a business, we have developed and retained a successful history delivering quality gas services to a range of asset owners. Our crews are highly skilled to complete the following work;

- ✦ Construction of medium and low pressure gas mains, and service connections
- ✦ Repairs and maintenance of medium and low pressure gas mains, and services connections
- ✦ 24/7 Emergency response on medium and low pressure gas mains
- ✦ Capital work projects for various government authorities and major constructors
- ✦ Mains renewal / rehabilitation projects



# Water and Sewer

As a service provider for water and sewer, Linbeck provides civil construction, repairs and maintenance to a range of asset owners. Linbeck is an accredited Sydney Water supplier for water main drillings, minor and major civil works in conjunction with the following services.

- ✦ Construction of mains to meter water services
- ✦ Repairs and maintenance of trunk & reticulation water mains
- ✦ Water mains – including construction of new mains and amplification/extension of existing mains
- ✦ Fire service installations and upgrades
- ✦ Water meter replacement and repair
- ✦ 24/7 emergency response
- ✦ Water service transfers
- ✦ Temporary water services
- ✦ Water pressure enquires
- ✦ Water sampling and testing
- ✦ Site inspections and maintenance on pumping stations & reservoirs

## Linbeck accreditations Sydney Water

W1 : Water Reticulation DN 100-375  
S1 : Sewerage Reticulation DN 150 – 300  
MS : Minor Works  
D1 : Water main drillings

## Hunter Water

C1 : Water and sewer reticulation

## Clients we service :

- Sydney Water
- Veolia Water
- Flow Systems
- Water Utilities Australia for works on AquaNet Recycled Water Network



# Plumbing

Linbeck provides plumbing services within the domestic, commercial and industrial industry.

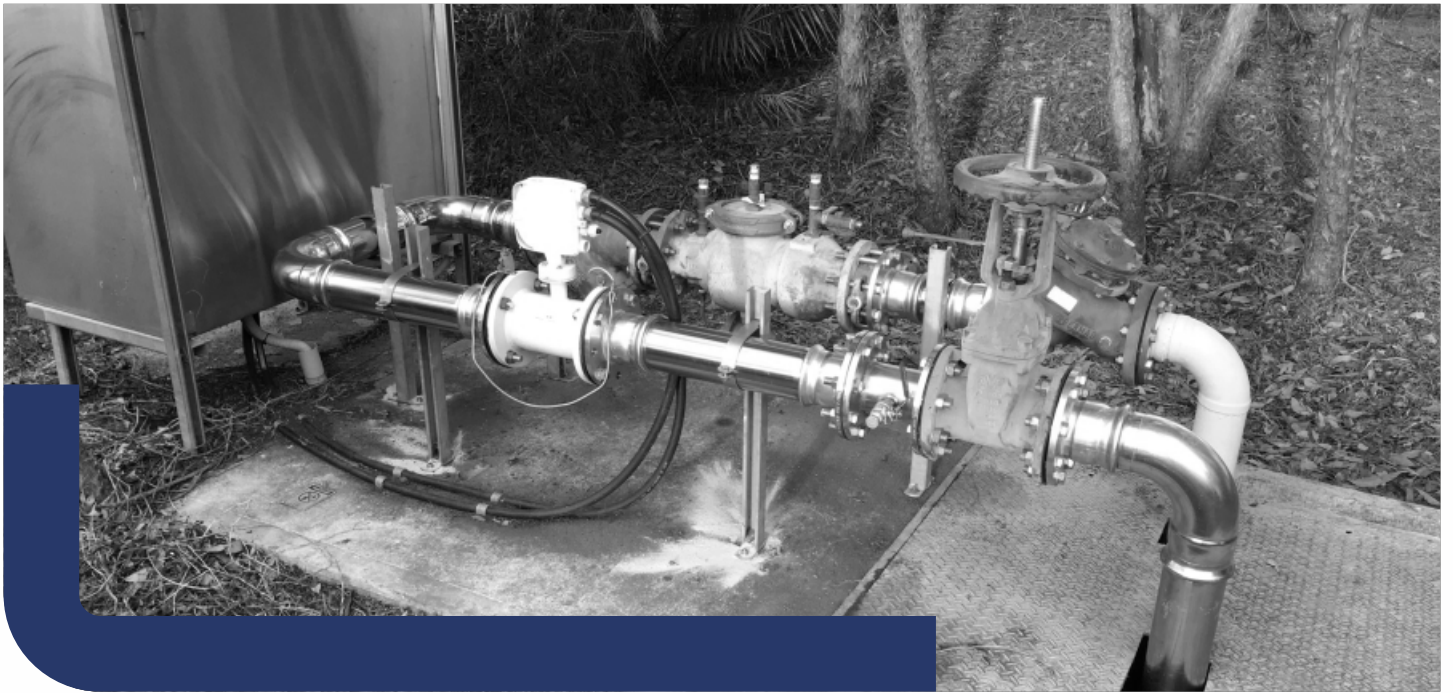
With highly skilled plumbers and crews, Linbeck is equipped with latest equipment to offer our clients the best and most cost effective solution for all your plumbing requirements.

## We specialise in the following plumbing services;

- ✦ Preventative and Reactive Maintenance
- ✦ Drain cleaning with the electric eel or high pressure water jet
- ✦ CCTV (Closed Circuit Television) pipe inspections
- ✦ Drainage repairs and renewals
- ✦ Hot water service repair and replacement
- ✦ Pipe freezing
- ✦ Smoke Testing
- ✦ Sewer and stormwater repairs
- ✦ Gas fitting including LPG
- ✦ Pipe locating and water leaks
- ✦ Emergency replacement, repair and service on all gas, electric and solar hot water heaters
- ✦ Backflow prevention, installation and certification/testing
- ✦ Thermostatic mixing valve installation, testing and maintenance







# Metering

Linbeck understands how critical reliable metering assets are to our clients, we provide a comprehensive range of repairs, maintenance and aged meter replacement services. Our crews attend sites to replace or service the existing meters as required, ensuring it is fully functional and compliant to client specifications.

Linbeck has the proven experience and the necessary developed management systems to deliver high volume metering projects on gas and water networks.

## Our range of metering services include:

- ✦ Planned and reactive meter maintenance
- ✦ Domestic, commercial and industrial applications
- ✦ Gas meter installation and maintenance
- ✦ Cold water meter installation and maintenance
- ✦ Hot water meter installations and maintenance
- ✦ Meter assembly upgrade/rebuild
- ✦ Restrictions, disconnections and reconnections





# Pipebursting

Pipe bursting is a trenchless technology method used to replace established pipelines in the same alignment without physically removing the existing pipeline. Bursting by using the existing established alignment to replace a pipe avoids the need to secure additional right-of-way to install the replacement pipe. Bursting can be used to upsize the pipeline increasing its flow capacity.

## Benefits of Pipe Bursting:



Provides a safe trenchless method for replacing defective water pipes



Gives clients the ability to upsize existing pipe to increase water capacity



Offers a cost effective method for pipe renewal



Sustainable solution for the environment

## Sliplining

Sliplining is used as another trenchless method for the renewal of existing water and gas infrastructure, where no pipe displacement occurs. Sliplining reduces the risk of damaging existing services in the vicinity of the renewed pipe selection.

## Benefits of Sliplining:



Minimal disruption to public surrounds



Cost effective rehabilitation method



Sustainable solution for the environment





# Vacuum Excavation

Linbeck offers Vacuum excavation trucks which provide a high precision, non destructive excavation method used for a range of civil works.

## Benefits for using Vacuum Excavation trucks.

- ✦ Eliminates the risk of damaging underground utilities and services
- ✦ Vacuum method replaces the need for conventional excavation
- ✦ Work is carried out in a safe and controlled manner
- ✦ Vacuum method leaves minimal damage to the environment
- ✦ Method is highly desirable in high risk and complex work environments



# Boring & Drilling Services

## Grundopit

The pit launched, mini-directional Grundopit is ideal for installing gas and water mains in tight working conditions where access is restricted. The Grundopit is easily operated by minimal crew onsite.

The Grundopit is capable of boring up to 60 metres and requires excavation of entry and exit pits 1.8 metres in length and 1 metre wide.

In conjunction with our boring services the F5 Falcon locating equipment gives us the ability to track rods, and produce bore profiles.

Bore range 20mm-300mm

## Grundomat

Grundomats are ideal for installation of water, gas services and conduits underneath road ways, drive ways and footpaths.

The Grundomat is capable for bore lengths up to 12 metres and requires excavation of entry and exit pits 1.5 metres in length and 1 metre wide.

Bore range 20 mm-110mm



# Our Projects





# Contact Us



28-34 Edward Street,  
Riverstone NSW 2765  
PO Box 195, Riverstone NSW 2765

---

**T** 02 9627 1680  
02 9627 3765

---

**E** [enquiries@linbeck.com.au](mailto:enquiries@linbeck.com.au)  
**W** [www.linbeck.com.au](http://www.linbeck.com.au)

